

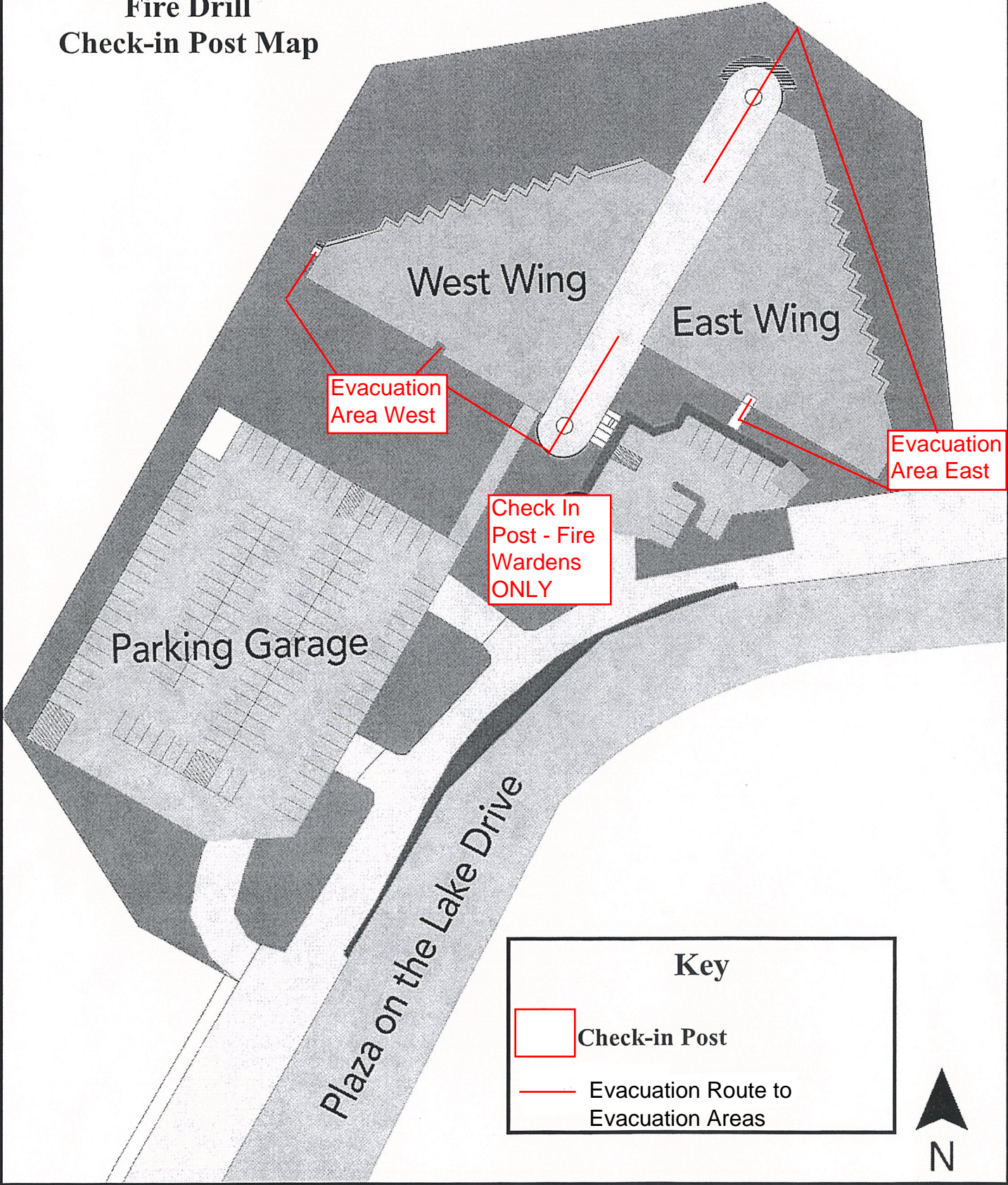


**Plaza on the Lake**  
***Fire Safety***  
***Fire Warden Responsibilities***

**During an evacuation:**

- 1) Stay calm.
- 2) Survey area during the evacuation to ensure everyone is exiting. Fire wardens should stay behind to make sure all personnel have left the area.
- 3) Gather only essential belongings with you. Close the doors behind you but **do not lock** them as the fire department will need easy access.
- 4) Go outside using the stairs. **Do not use elevators.** If you are in an elevator when the alarm sounds, do not push the emergency stop button. The elevator will automatically return to its base level and open.
- 5) Be prepared to assist occupants with special needs.
- 6) Once outside please **report to the fire warden check-in post** (see map for reference) and give notice of a safe evacuation. Access will not be allowed until all tenants have checked in and confirmed a safe evacuation.
- 7) Once the Fire Department or Property Manager gives the "All Clear" you can return to the building.

**Plaza on the Lake  
Fire Drill  
Check-in Post Map**



Check In  
Post - Fire  
Wardens  
ONLY

Evacuation  
Area West

Evacuation  
Area East

West Wing

East Wing

Parking Garage

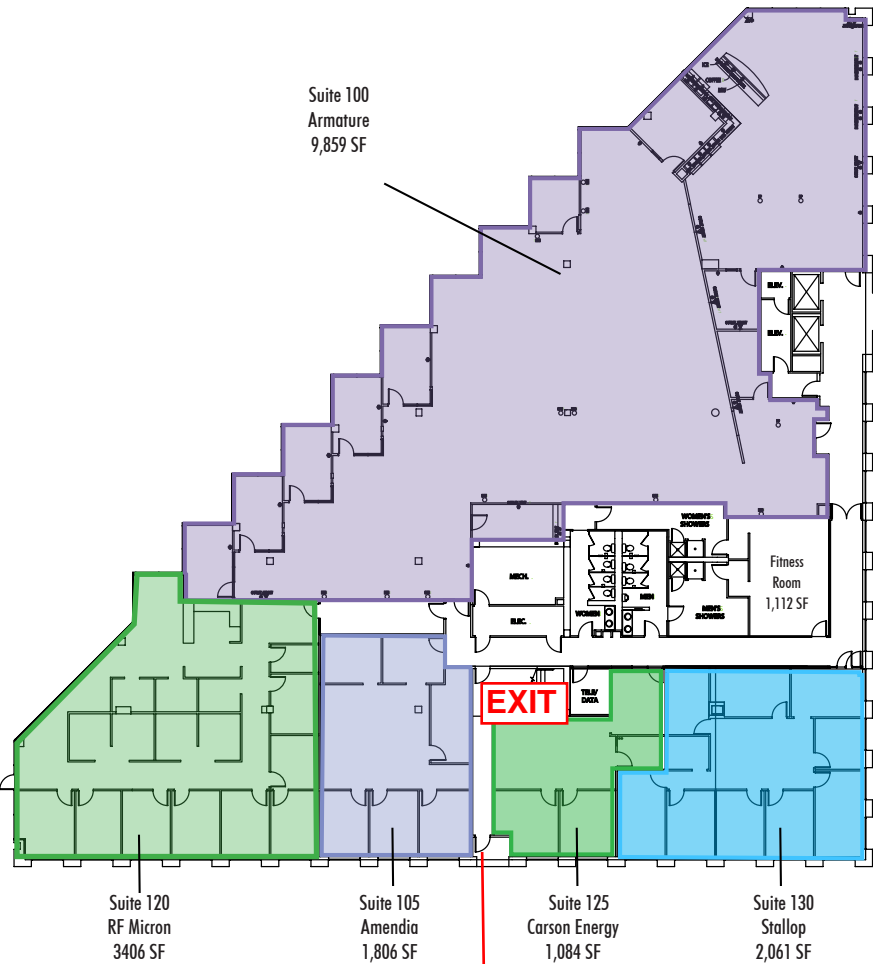
Plaza on the Lake Drive

**Key**

- Check-in Post
- Evacuation Route to Evacuation Areas

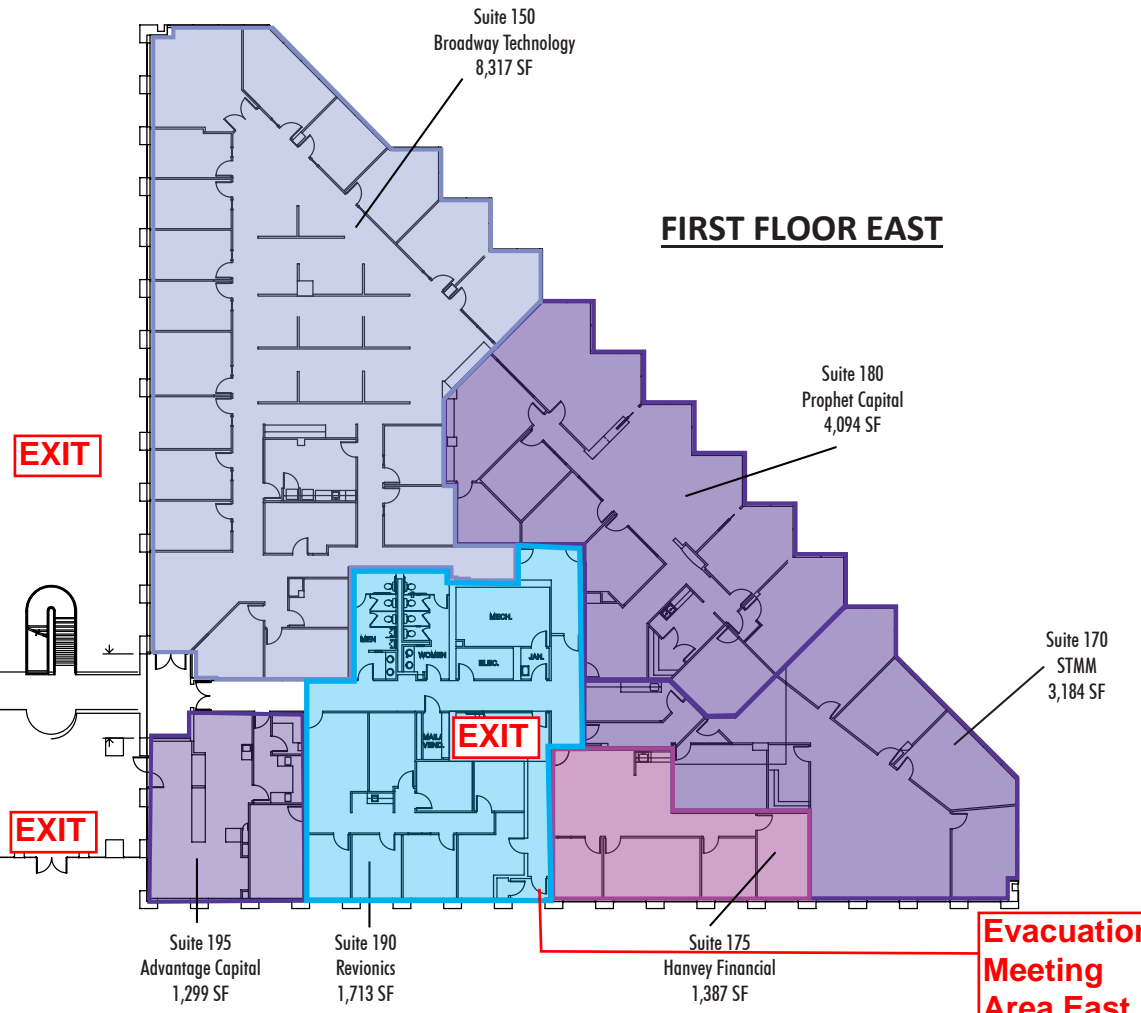


**FIRST FLOOR WEST**



**Evacuation Meeting Area West**

**FIRST FLOOR EAST**



**Evacuation Meeting Area East**

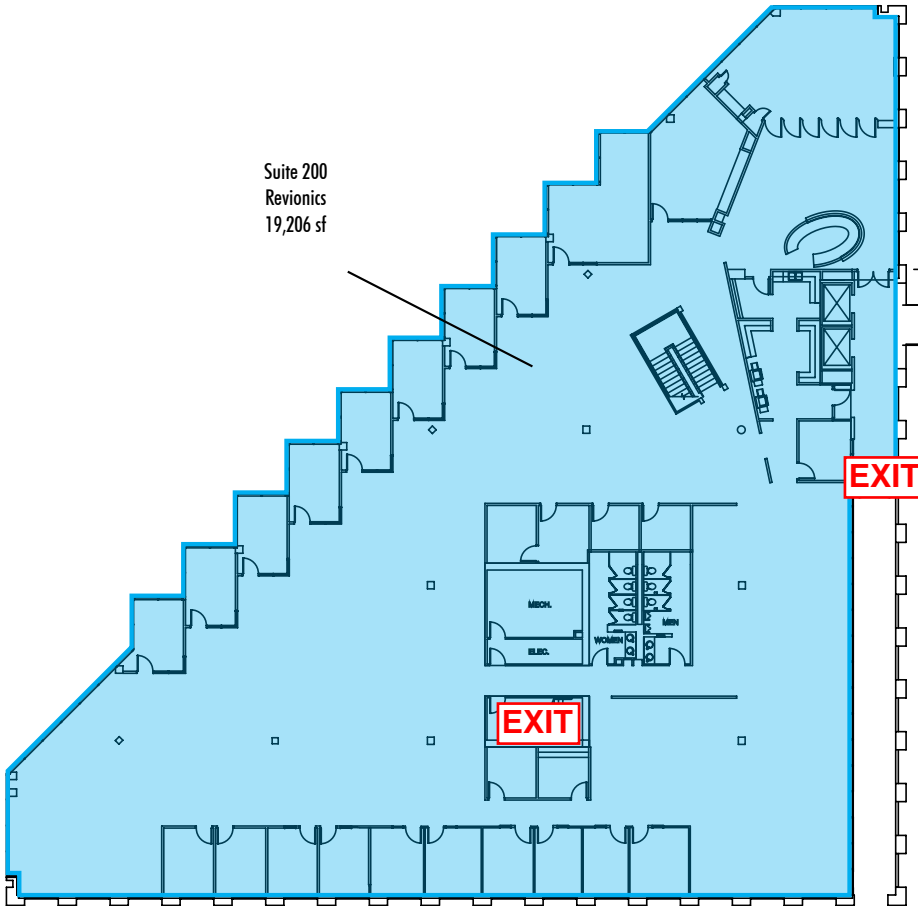


**FIRE EVACUATION MAP**  
Plaza on the Lake  
First Floor

**Endeavor Real Estate Group**  
504 Lavaca Street, Suite 1160  
Austin, Texas 78701  
Phone: 512 682-5500  
Fax: 682-5505  
www.endeavor-re.com

**SECOND FLOOR WEST**

Suite 200  
Revionics  
19,206 sf



**SECOND FLOOR EAST**

Suite 250  
Carson Energy  
9,506 SF

Suite 265  
MPV  
10,699 SF



**EXIT**

**EXIT**

**EXIT**



**FIRE EVACUATION MAP**  
**Plaza on the Lake**  
**Second Floor**

**Endeavor Real Estate Group**  
504 Lavaca Street, Suite 1160  
Austin, Texas 78701  
Phone: 512 682-5500  
Fax: 682-5505  
[www.endeavor-re.com](http://www.endeavor-re.com)

